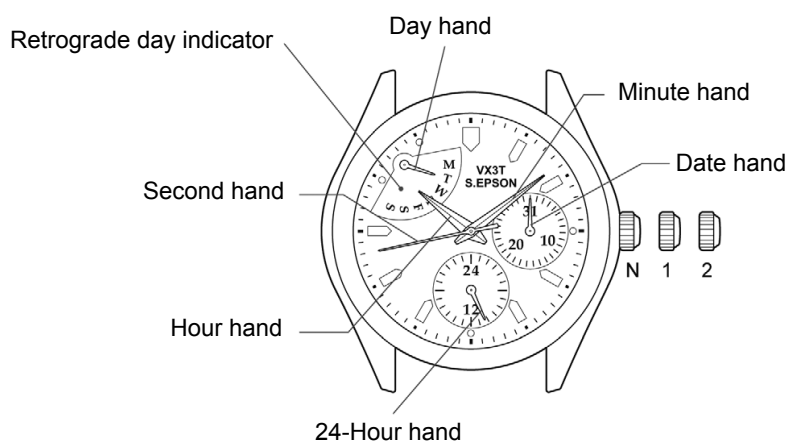




IFMVX3T

INSTRUCTION MANUAL

A) DISPLAYS AND BUTTONS



N Normal position
1 2nd click position
2 1st click position

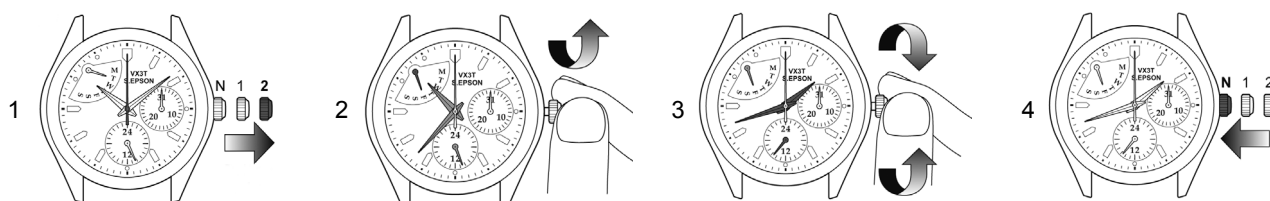
Features

1. Hour, Minute and Second Hands.
2. 3:00H: 31 day calendar display.
3. 6:00H: 24 hour display
4. Retrograde Day Indicator
 - After the day hand reaches the last day of the week, the hand will jump to the first day of the week.
5. Timing of day changes.
 - The date hand moves to the next between 11:00 p.m. and 12:00 p.m.
 - The day hand moves to the next between 2:00 a.m. and 4:00 a.m.

Movement size	10 1/2"
Outside Diameter	24.00 mm: 21.50 mm (12H-6H) X 21.50 mm (3H - 9H)
Casing Diameter	23.30 mm: 21.30 mm (12H-6H) X 21.50 mm (3H - 9H)
Height	3.86 mm (Include battery)
Battery	SR920SW
Battery Life	Approx. 3 years

B) SETTING THE TIME AND DAY

1. Pull crown out to the 2nd click position when the second hand is at the 12 o'clock position
2. Turn the crown clockwise to advance the hour and minute hands until Day hand is set to the desired day of the week.
Note: The day hand will not back by turning the crown counterclockwise.
3. Turn to set the time.
4. Push crown back to normal position.

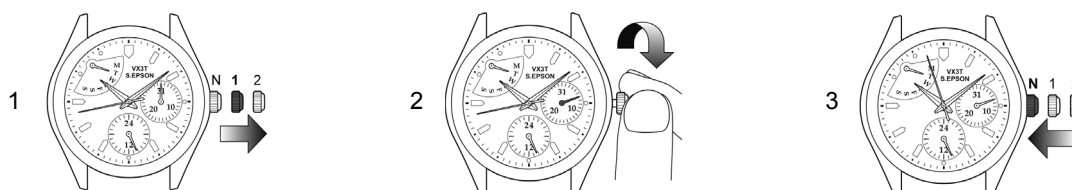


Advance Setting Technique

1. To advance the day hand quickly, turn back the hour and the minute hands 4 to 5 hours beyond the point of the day changes (between 11:00 p.m. and 4:00 a.m.), and then advance them again until the day hand is set to the next.
Note: The day hand will not move back by turning the crown counterclockwise.
2. After the day hand reaches the last day of the week, turn the crown clockwise and the hand will return to the first day of the week (retrograde day indicator).
3. The 24-hour hand moves correspondingly with the hour hand.
4. When setting the hour hand, check that the 24-hour hand is correctly set.
5. When setting the minute hand, advance it 4 to 5 minutes ahead of the desired time and then turn it back to the exact time.

C) SETTING THE DATE

1. Pull crown out to the 1st click position.
2. Turn the crown counterclockwise to set Date hand.
Note: The date hand will not back by turning the crown clockwise.
3. Push crown back to normal position.



Advance Setting Technique

1. Do not set the date hand between 9:00 p.m. and 1:00 a.m. Otherwise, it may not turn properly.
2. While setting the date hand, check that it moves properly in one-day increments.
3. It is necessary to adjust the date on the first day after a 30-day month and February.

