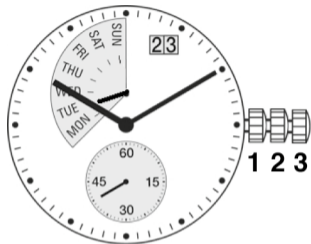




USER GUIDE IJM7004P

Information & references



Case

case drawings

Dial, date window and day indicator

dial drawings

Hand fitting heights & specifications for hands

hand fitting height drawings

Hand setting procedure

1. Day indicator

(no quick mode is available for the adjustment of the day indicator)

- Prior to the removal of the day indicator working-hand it is important to remember the day, indicated on the movement. (example: TUE = Tuesday).

MON	TUE	WED	THU	FRI	SAT	SUN
1	2	3	4	5	6	7
○	○	○	○	○	○	○

- After the dial setting, the day indicator-hand must be set, pointing to same day (example: TUE = Tuesday).



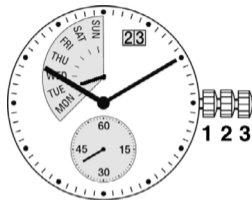
Is is also possible to proceed as follows:

- Prior to the removal of the day indicator working-hand and prior to the placement of the dial, the crown must be turned clockwise (stem position 3) until the day indicator working-hand jumps back into the left position.
- After the dial-setting, the day indicator-hand must be set, pointing to MON.



Hand setting procedure

2. Hour and minute hand



- **Stem position 2** (quick mode): The date must be set to 02 by turning the crown anti clockwise.
- **Stem position 3**: Turn the crown clockwise until the date changes from 02 to 03.
- Set the hands to 12.00 h

Calendar changing phases

Date: $1\frac{1}{2}$ - 2 hours. Day of week: $\frac{3}{4}$ - 2 hours (after the date change)



By virtue of the regulations pursuant to the handling of waste products deriving from electronic and electrical equipment, end of life cycle watch making products must be selectively collected for processing. You may therefore dispose of your quartz watch making products at any of our retail outlets or any other authorized collection point. The selective collection, processing, rating and recycling of these products helps contribute to safeguarding the environment and protecting our health.



FESTINA GROUP
Via Layetana, 20
08003 BARCELONA

A COMPANY OF THE FESTINA GROUP